

# TYPE “A” LOW LUMINOSITY LED OBSTACLE SIGNAL DEVICE



## Type 95 870

The signal device meets the following regulations:

**ICAO Annex 14, Volume I, 4th edition 2004 (Photometric requirements)**

**FAA Specification AC 150/5345-43E (Resistance against environmental effects)**



## Basic Information

The components used are made of materials highly resistive against the environment the signal device is exposed to in the normal operation. The signal device radiates constant red light with the minimum luminous intensity of 10 candles.

A body consisting of a thick-walled aluminium tube connected in the bottom section with a tilting cover and furnished in the top section with a glass dioptré is the basic part of the signal device. A holder for fixing the signal device and an outlet for connecting the supply voltage cable are fixed to the bottom cover.

The **luminous source** consists of twenty light-emitting elements evenly distributed on the walls of a regular truncated pentahedral cone and is located under the glass dioptré. An insert placed between the luminous source and the dioptré top ensures the luminous unit stable position. The constant current source is located inside the signal device body under the luminous source plate.

The optical section is sealed with a ring made of micro-porous silicone and furnished with anti-dust filter for equalization of pressures. The signal device can be mounted and fixed in both the vertical and horizontal direction.

During its operation, the signal device keeps the temperature above the freezing point thus preventing frost deposits from occurring.

## Use

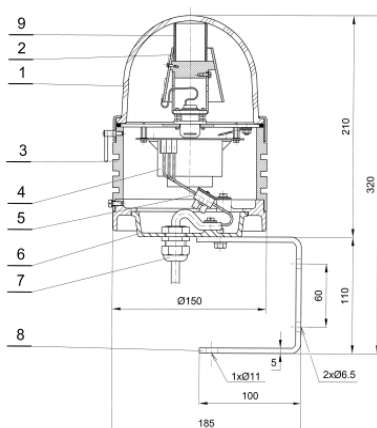
The low luminosity signal device radiates constant **red colour** light and is used for marking objects that are or could be an obstacle for the airport operation (chimneys, high-rises, poles and others).

## Installation

The obstacle signal device is installed on a vertical or horizontal support by means of two M8 stainless screws. The input supply cable, including the interconnecting cable, enters the switchbox through cable throughputs. Thanks to LEDs with a long-term service life, the signal device virtually does not need any maintenance. The supply section is accessible after tilting the cover.

### Technical Diagram

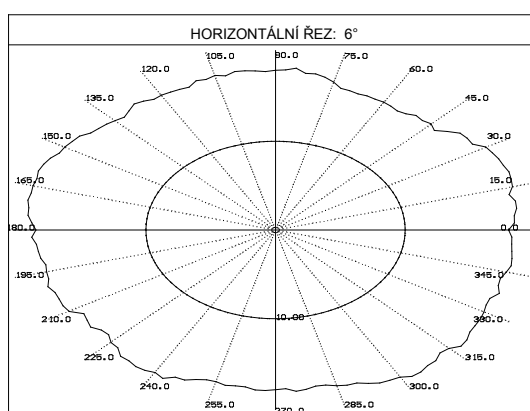
- 1 - Dioptre
- 2 - Luminous source:
- 3 - Body
- 4 - Current source
- 5 - Terminal plate
- 6 - Cover
- 7 - Outlet
- 8 - Holder
- 9 - Insert



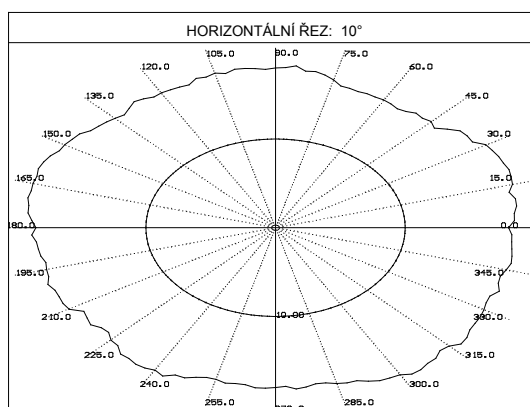
### Photometric Data

Luminosity curves:

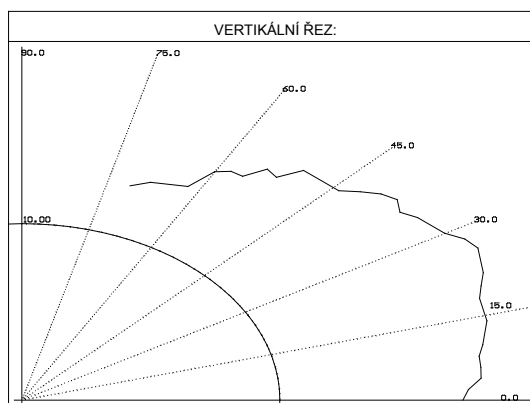
#### 1. Horizontal section – 1: 6° aiming



#### 2. Horizontal section – 2: 10° aiming



#### 3. Vertical section



## Basic Technical Data

### Mechanical Parameters:

Dimensions (DxH): 150x210 mm

Mass: 3.2 kg

### Electrical parameters:

Supply voltage: 230 V / 50 Hz

Rated input: 20 W

Insulation resistance: Min. 2 M $\Omega$

Protection level: IP54

### Other Parameters:

Operation temperature: -55°C up to +55°C

LED elements service life: 50,000 hours

## Contact

### ELTODO EG, a.s.

Novodvorská 1010/14

142 01 Praha 4, Czech Republic

Phone: +420 261 346 828

Fax: +420 261 346 803

E-mail: [eltodo@eltodo.cz](mailto:eltodo@eltodo.cz)

<http://www.eltodo.cz>