

TYPE 95 302 A, B

The signal device meets the following regulations:

ICAO Annex 14, Volume I, 3rd edition 1999
(Photometric requirements)

FAA Specification AC 150/5345-46C
(Resistance against environmental effects)

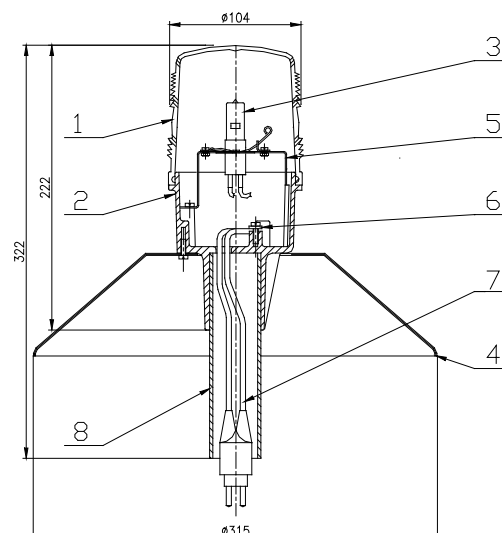


Basic Information

This **signal device** consists of a dioptrite and a base. The dioptrite is made of pressed Lexan®: it is tinted blue in the **95 302 A** type signal device, and clear in the **95 302 B** type signal device without any colour tint. The cylindrical base made of pressed taboren tinted in aerial yellow is used as the support for the optical unit. A tube is pressed in the base from under. To make it more distinctive, the signal device may be furnished with an aluminium cone protected with the same colour powder coating. The signal device design makes it resistant against static and dynamic effects of the ambient environment it is exposed to during operation.

Technical Diagram

- 1 - Dioptrite
- 2 - Base
- 3 - Bulb
- 4 - Cone
- 5 - Bulb holder
- 6 - Clamp
- 7 - Plug
- 8 - Tube



Use

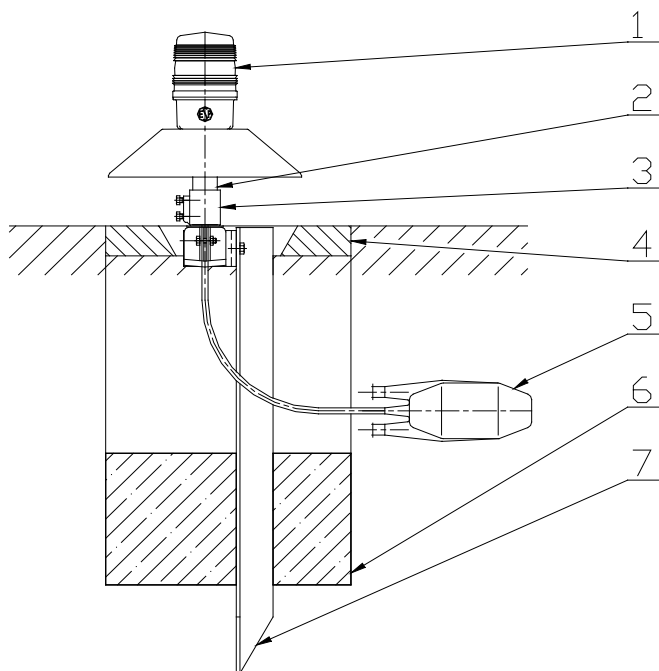
The **95 302 A** type aboveground omni-directional signal device is used for luminous marking of lateral rolling runways of the ICAO category I to III airports. The **95 303 B** type signal device is used as the lateral runway signal device for non-categorised airports.

Installation

The signal device may be installed directly into the ground on a tilting needle, or fixed to the cover.

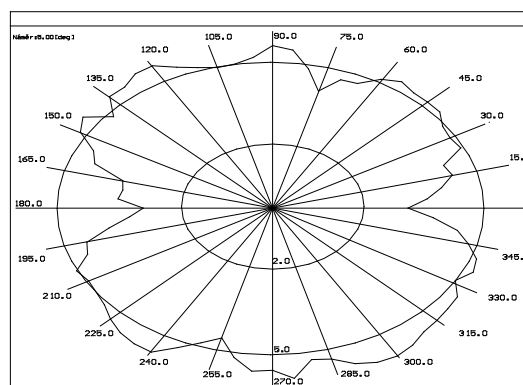
Installation example:

- 1 – Signal device
- 2 – Tube
- 3 – Breakable coupling
- 4 – Concrete (asphalt) protective circle
- 5 – Insulation transformer
- 6 – Concrete for anchoring the needle
- 7 – Tilting needle



Photometric Data

Luminosity curves:
1. 95 302 A (blue, 36 W)



Basic Technical Data

Mechanical Parameters:

Dimensions (DxH): 104x322 mm (w/o cone)
 Mass: 0.5 kg (w/o cone)

Electrical Parameters:

Input: Type A 36 W, type B 45 W
 Current: 6.6 A
 Insulation resistance: Min. 50 MΩ
 Protection level: IP54
 Type A luminous source used: Airport halide bulb 36 W / 6.6 A, G (Y) 6.35

Basic Technical Data

Type B luminous source used:

Airport halide bulb 45 W / 6.6 A,
G (Y) 6.35

Other Parameters:

Operation temperature:

-55°C up to +55°C

Contact

ELTODO EG, a.s.

Novodvorská 1010/14

142 01 Praha 4, Czech Republic

Phone: +420 261 346 828

Fax: +420 261 346 803

E-mail: eltodo@eltodo.cz

<http://www.eltodo.cz>