

Type 43 860

The signal device meets the following regulations:

ICAO Annex 14, Volume I, 3rd edition 1999

(Photometric requirements)

FAA Specification AC 150/5345-43E (Resistance against environmental effects)



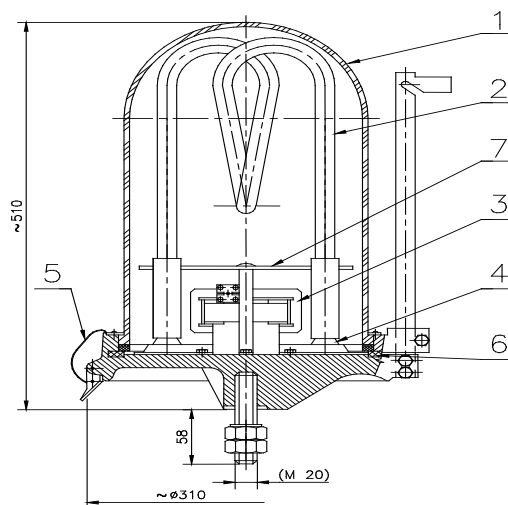
Basic Information

The body of the **obstacle signal device** is an aluminium cast to which a stray transformer (diffuser) with the supply terminal plate, contacts, neon discharge lamps and a plug outlet are fixed. A covering dioptré made of sodium-magnesium annealed glass is fixed to the signal device body with three spring fasteners.

From underneath, the body is furnished with a robust central bolt that serves for fixing the signal device during the installation. All metallic parts of the signal device that are not stainless are finished with a protective coating. The signal device is designed with respect to an easy installation, maintenance, and the neon discharge lamp replacement; it is highly resistant to the ambient environment it is exposed to during operation.

Technical Diagram

- 1 - Covering glass
- 2 - Neon discharge lamp
- 3 - Transformer
- 4 - Insulator
- 5 - Feather
- 6 - Sealing
- 7 - Complete mirror



Use

The low luminosity **obstacle signal device** is the signal device with a constant red colour light radiation. It is used for marking objects that are or could be obstacles for the airport operation (chimneys, high-rises, poles, and others).

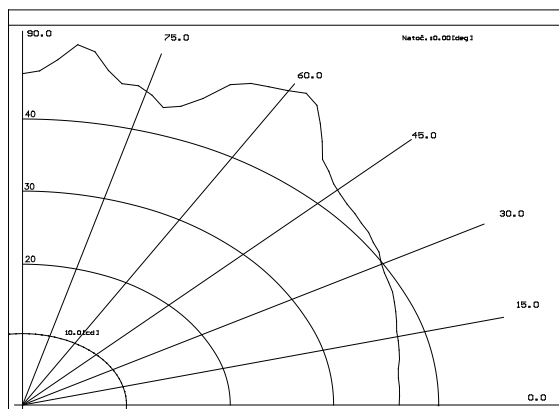
Installation

The obstacle signal device is mounted on a console by means of a M20 central bolt.

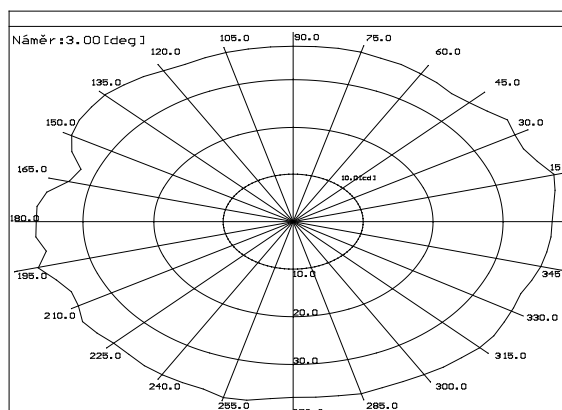
Photometric Data

Luminosity curves:

1. Vertical section



2. Horizontal section



Basic Technical Data

Mechanical parameters:

Dimensions (DxH): 310x550 mm

Mass: 12.5 kg

Electrical parameters:

Supply voltage: 230 V / 50 Hz

Rated input: 75 W

Insulation resistance: Min. 2 MΩ

Protection level: IP43

Luminous source used: 43860 D 022 neon tube

Other Parameters:

Operation temperature: -55°C up to +55°C

Neon tube service life: 10,000 hours

Contact

ELTODO EG, a.s.

Novodvorská 1010/14

142 01 Praha 4, Czech Republic

Phone: +420 261 346 828

Fax: +420 261 346 803

E-mail: eltodo@eltodo.cz

<http://www.eltodo.cz>