

Type 95 293

The signal device meets the following regulations:

**ICAO Annex 14, Volume I, 4th edition 2004
(Photometric requirements)**

**FAA Specification AC 150/5345-28E
(Resistance against environmental effects)**



Basic Information

The **landing approach signal device** consists of two optical systems turned to each other, and elements needed for its approximate aiming.

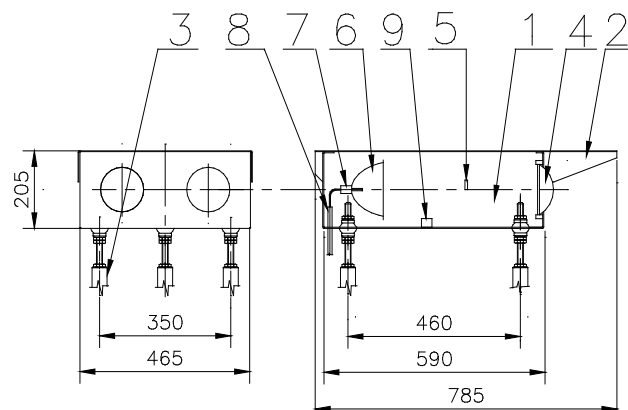
The landing approach signal device is mounted, depending on the application, on the set of three feet.

The **optical system** of the landing approach signal device consists of planoconvex lenses in the box front plane. Ellipsoidal reflectors with halide bulbs and flat red filters are located under the removable cover in the box rear section. Supply cables for bulbs enter through plug outlets in the box bottom and end with standard plugs outside the signal device. The overhanging cover of the box protects lenses against sunrays, rain, and snow. The **signal device design** makes it resistant against static and dynamic effects of the ambient environment it is exposed to during the operation. Powder coating in the "aerial yellow" and the "matt black" tints protects the signal device.

The luminous beam coming out of the landing approach signal device is symmetrically spread around the horizontal optical centreline over the white and red half-plane. As seen by the pilot, the colour of the signal device appears white if he flies in the half-plane above its horizontal optical centreline, and red if he flies in the half-plane under the centreline. The signal devices in the system are aimed symmetrically around the angle of the ideal landing approach plane in slight angular spacing.

Technical Diagram

- 1 - Box
- 2 - Cover
- 3 - Three-feet set
- 4 - Lens
- 5 - Red filter
- 6 - Reflector with socket
- 7 - Bulb
- 8 - Plug
- 9 - Platelet



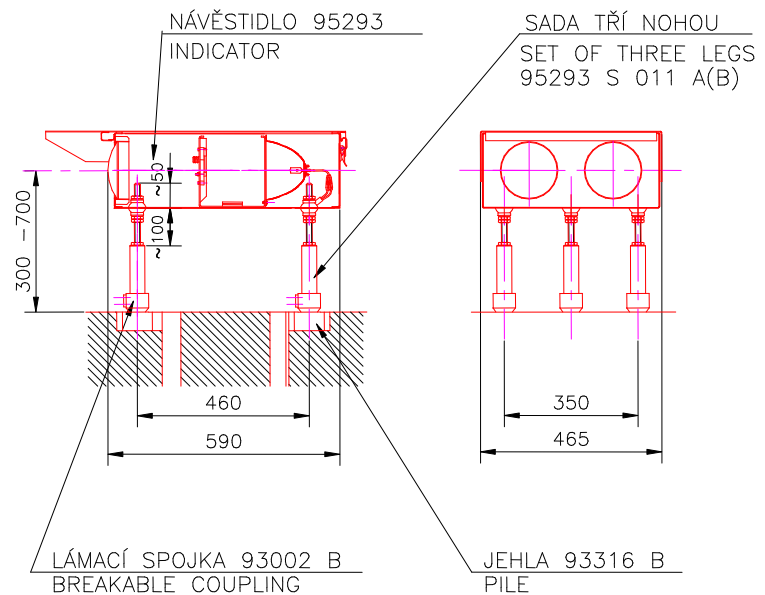
Use

The landing approach signal device is designed for marking the correct landing angle for an airplane or a helicopter when approaching the airport or the heliport. This signal device is the basic component of the **PAPI** and **APAPI** airport landing approach luminous systems.

The pilot gets the information on the landing approach trajectory through the ratio of the red-beaming signal devices to that of the white-beaming ones. The optimal approach trajectory is indicated by the ratio of 2:2 for the PAPI system, and 1:1 for the APAPI system.

Installation

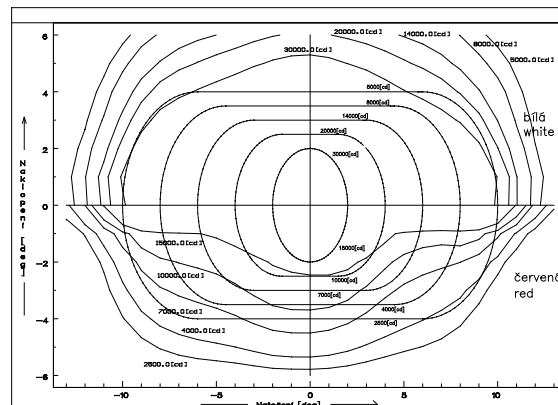
The **landing approach signal device** is mounted according to its application using a set of retractable feet and breakable couplings on concrete-cast tilting needles (piles).



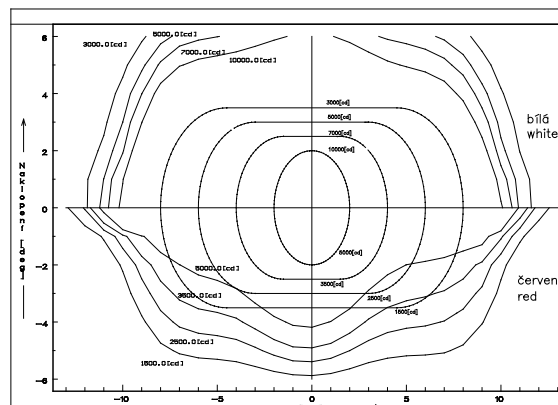
Photometric Data

Luminosity curves:

1. PAPI (2x200 W)



2. APAPI (2x100 W)



Basic Technical Data

Mechanical parameters:

Dimensions (WxLxH): 785x465x205 mm (w/o legs)
Mass: 15 kg

Electrical parameters:

Input: 2x200 W (2x100 W)
Current: 6.6 A
Insulation resistance: Min. 50 MΩ
Protection level: IP54
Luminous source used: Airport halide bulb 200 W (100 W) / 6.6. A, Pk30d

Other parameters:

Operation temperature: -55°C up to +55°C

Contact

ELTODO EG, a.s.

Novodvorská 1010/14
142 01 Praha 4, Czech Republic
Phone: +420 261 346 828
Fax: +420 261 346 803
E-mail: eltodo@eltodo.cz
<http://www.eltodo.cz>