

Type 95 201

The signal device meets the following regulations:

**ICAO Annex 14, Volume I, 4th edition 2004
(Photometric requirements)**

**FAA Specification AC 150/5345-46C
(Resistance against environmental effects)**



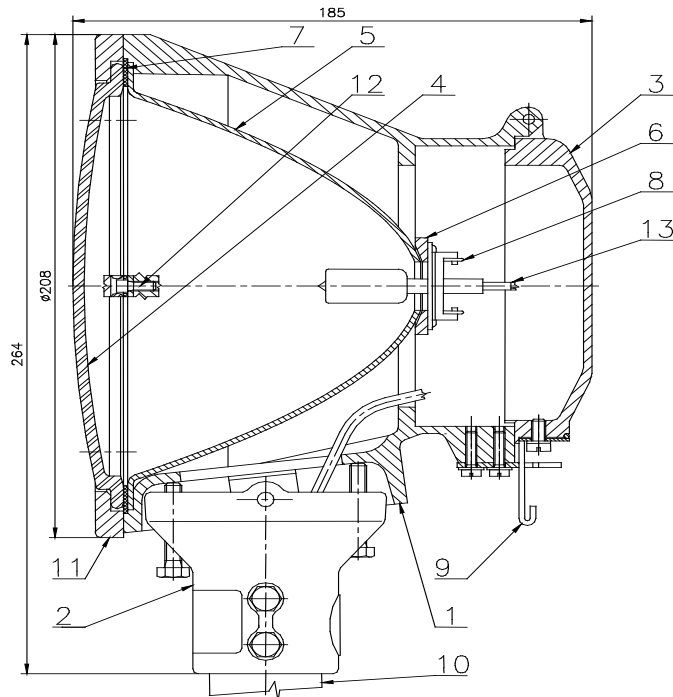
Basic Information

The **signal device** consists of the body, the support, the cover, and the diffuser that, according to its use, also functions as the colour filter. The body houses the reflector and the bulb holder. The diffuser is fixed with screws through the reflector sealing.

The cover is pivoted on a pin and secured with a stainless feather. Screws on the body support allow vertical tilting of the signal device. Metallic parts of the signal device are made of anticorrosive materials. Powder coating in the "aerial yellow" tint protects the signal device. The signal device design makes it resistant against static and dynamic effects of the ambient environment it is exposed to during operation.

Technical diagram

- 1 - Body
- 2 - Support
- 3 - Cover
- 4 - Diffuser
- 5 - Reflector
- 6 - Bulb holder
- 7 - Sealing
- 8 - Feather
- 9 - Spring
- 10 - Full tube
- 11 - Circle
- 12 - Screw
- 13 - Bulb



Use

The 95 201 type airport luminous above-ground unidirectional signal device is used for marking runway and roll systems in the following variants:

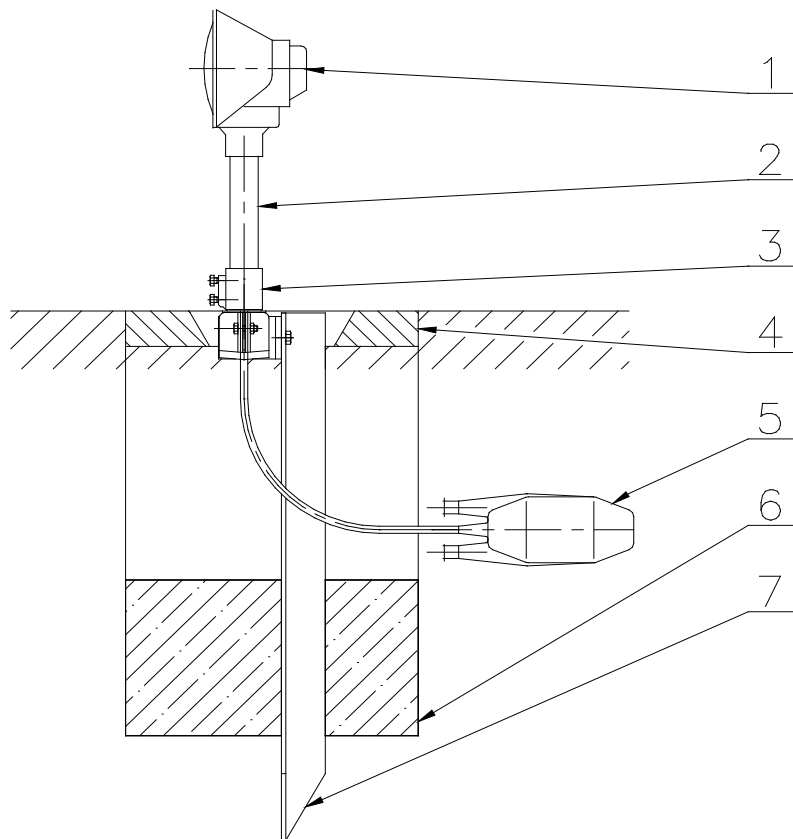
	Use	Colour	Curve ICAO	Bulb Input	
				HRJF	OSRAM PHILIPS
A0	Lateral RWY	white	2.9 2.10	100 W	65 W
A1	Rolling lateral	red	2.2	200 W	200 W
A1	Terminal RWY	red	2.8	100 W	65 W
A2	Threshold Outside Half-Rail	green	2.4	200 W	150 W
A2	Threshold	green	2.3	100 W	100 W
A3	Lateral RWY	yellow	2.9 2.10	45 W	45 W
B0	Rolling central line and Rails	white	2.1	200 W	150 W

Installation

The signal device may be installed directly into the ground on a tilting needle, or fixed to the cover.

Installation example:

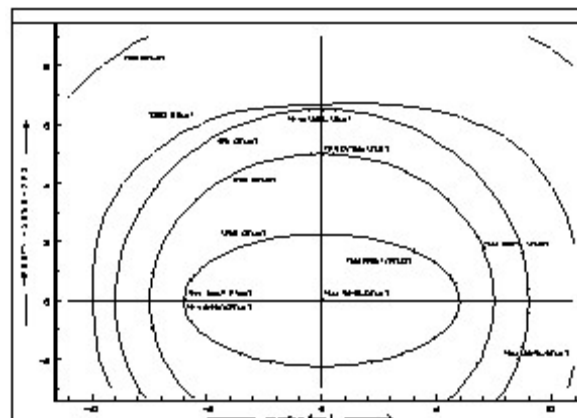
- 1 – Signal device
- 2 – Tube
- 3 – Breakable coupling
- 4 – Protective circle
- 5 – Insulation transformer
- 6 – Concrete for anchoring the needle
- 7 – Tilting needle



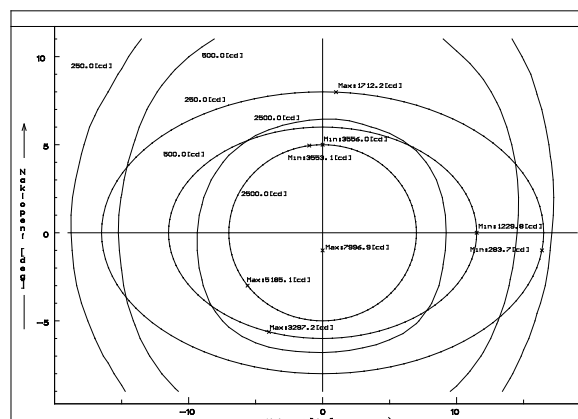
Photometric data

Luminosity curves:

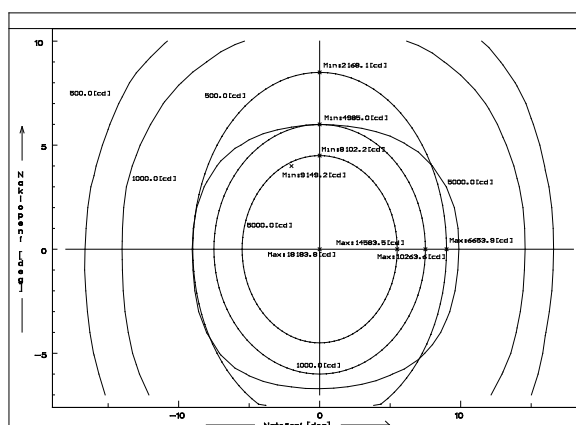
- 1. 95 201 A1
(red, 100 W) 2.8



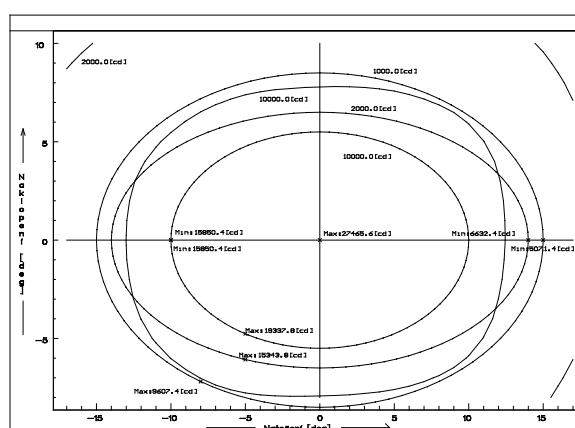
- 2. 95 201 A1
(red, 200 W) 2.2



**3. 95 201 A1
(green, 100 W) 2.3**



**4. 95 201 A1
(white, 200 W) 2.1**



Basic technical data

Mechanical Parameters:

Dimensions (DxLxH): 208x184x264 mm (w/o tube)

Mass: 2.5 kg

Electrical Parameters:

Input: As per the use

Current: 6.6 A

Insulation resistance: Min. 50 MΩ

Protection level: IP54

Luminous source used: Airport halide bulb as per the use, Pk30d

Other Parameters:

Operation temperature: -55°C up to +55°C

Contact

ELTODO EG, a.s.

Novodvorská 1010/14

142 01 Praha 4, Czech Republic

Phone: +420 261 346 828

Fax: +420 261 346 803

E-mail: eltodo@eltodo.cz

<http://www.eltodo.cz>